

41B.

(ROCK)

SWEET HENRY

- STEVE SWALLOW

JACK GREGG

D F#-7/C# B- B-7/A G Cmaj7 D



B- B-7/A E7/G# A G A7sus4 D



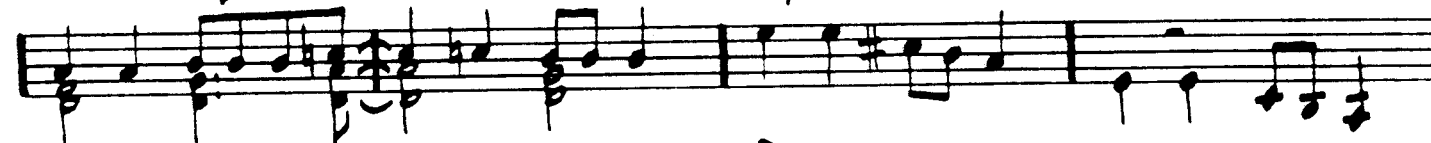
A/E E E/D D



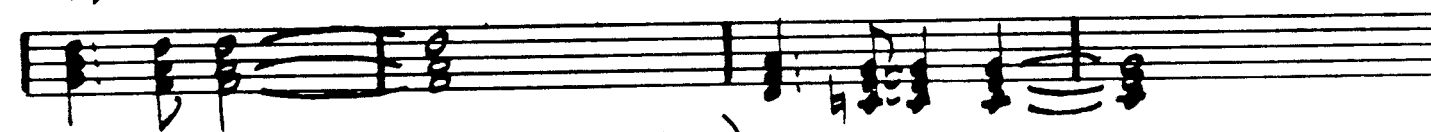
A/C# E/B B E/B B7 E/B



D G/D D7 G E7/G# A7 A7



G/D D D/C C



G/B D/A (VAMP) A D A7 D



D F#-7/C# B- B-7/A G Cmaj7 D



RIT. FINE